

LEDTEC



LED RETAIL RANGE

More sales with perfect light at the POS

COFFEE SHOP



SPECIAL OFFER

BUY 3 GET 1 FREE

BUY 3 GET 1 FREE

**COFFEE
TO GO**

Latte
with vanilla

POS

Point of Sales >>> Professionally organised product range

LEDTEC offers you the compact complete solution for the perfect illumination of your products at the POS

- | | |
|--|----|
| ① Shelf illumination
prefabricated linear luminaires | 4 |
| ② Shelf illumination "TegoLight®"
for tool-free, convenient installation | 6 |
| ③ eShelf - Digital head displays
customisable digital LED displays | 10 |
| ④ eShelf - Digital front displays
for digital product and price labelling | 10 |
| ⑤ LightGuidePanel
extremely flat LED diffusing disc | 14 |
| ⑥ Lightwave films
flexible, modular, customisable light panels | 16 |
| ⑦ PowerTracks' conductor rails
for concealed electrification | 18 |



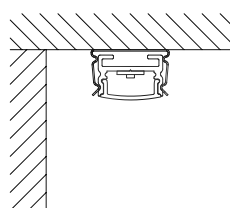
SHELF ILLUMINATION

Individually configurable

LED LUMINAIRE OSLO

SPECIFICATIONS

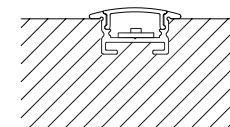
- max. length:: 2500 mm
- Outer dimension: 17 x 10,8 mm
- Inner dimension: 12 mm
- Material: aluminium
- Surface finish: anodised, silver, black
- Covering: clear, frosted, milky, black



LED LUMINAIRE BERGEN

SPECIFICATIONS

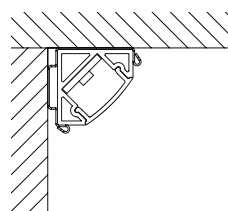
- max. length: 2500 mm
- Outer dimension: 23,2 x 10,9 mm
- Inner dimension: 12 mm
- Material: aluminium
- Surface finish: anodised, silver, black
- Covering: clear, frosted, milky, black



LED LUMINAIRE BASEL

SPECIFICATIONS

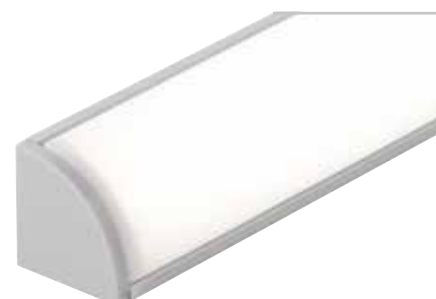
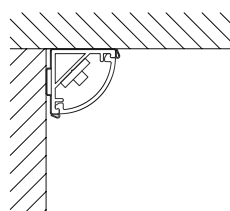
- max. length: 2500 mm
- Outer dimension: 18,5 x 18,5 mm
- Inner dimension: 12 mm
- Material: aluminium
- Surface finish: anodised, silver, black
- Covering: clear, frosted, milky, black



LED LUMINAIRE BREGENZ

SPECIFICATIONS

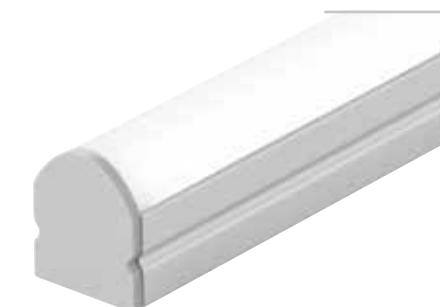
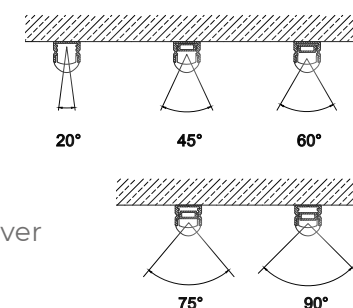
- max. length: 2500 mm
- Outer dimension: 16 x 16 mm
- Inner dimension: 12 mm
- Material: aluminium
- Surface finish: anodised, silver
- Covering: clear, frosted, milky



LED LUMINAIRE JENA

SPECIFICATIONS

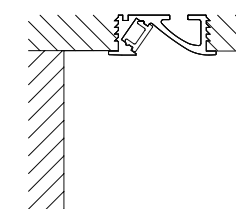
- max. length: 2500 mm
- Outer dimension: 15,5 x 12 mm
- Inner dimension: 10 mm
- Material: aluminium
- Surface finish: anodised, silver
- Covering: Clear lens



STYLELINE ALU 10

SPECIFICATIONS

- Length: 2500 mm
- Outer dimension: 10,5 x 24 mm
- Inner dimension: 8,1 mm
- Material: aluminium
- Surface finish: anodised, silver
- Covering: milky



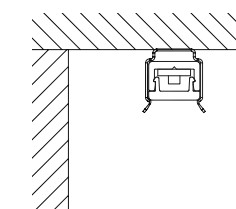
LED COMBINATIONS OSLO | BERGEN | BASEL | BREGENZ | JENA | STYLELINE

Number LED/m	Output/m	Colour	Luminous flux/m
80 LED/m	3,6W/m	2700K / 3000K / 4000K / 6500K	450 - 480 lm/m
140 LED/m	7,2W/m	2700K / 3000K / 4000K / 6500K	520 lm/m
160 LED/m	9,6W/m	2700K / 3000K / 4000K / 6500K	1240 - 1340 lm/m
160 LED/m	9,6W/m	2700K / 3000K / 4000K / 6500K	1590 - 1740 lm/m
240 LED/m	18W/m	2700K / 3000K / 4000K	2500 - 2600 lm/m
COB	10W/m	2700K / 3000K / 4000K	1040 - 1140 lm/m
60 LED/m	14,4W/m	RGB	
240 LED/m	19,2W/m	2700K / 3000K / 4000K / 6500K	715 - 772 lm/m
120 LED/m	19,2W/m	RGB +3000K	

LED LUMINAIRE DUBLIN

SPECIFICATIONS

- max. length: 2500 mm
- Outer dimension: 8 x 4,6 mm
- Inner dimension: 6 mm
- Material: aluminium
- Surface finish: anodised, silver, black
- Covering: clear, frosted, milky



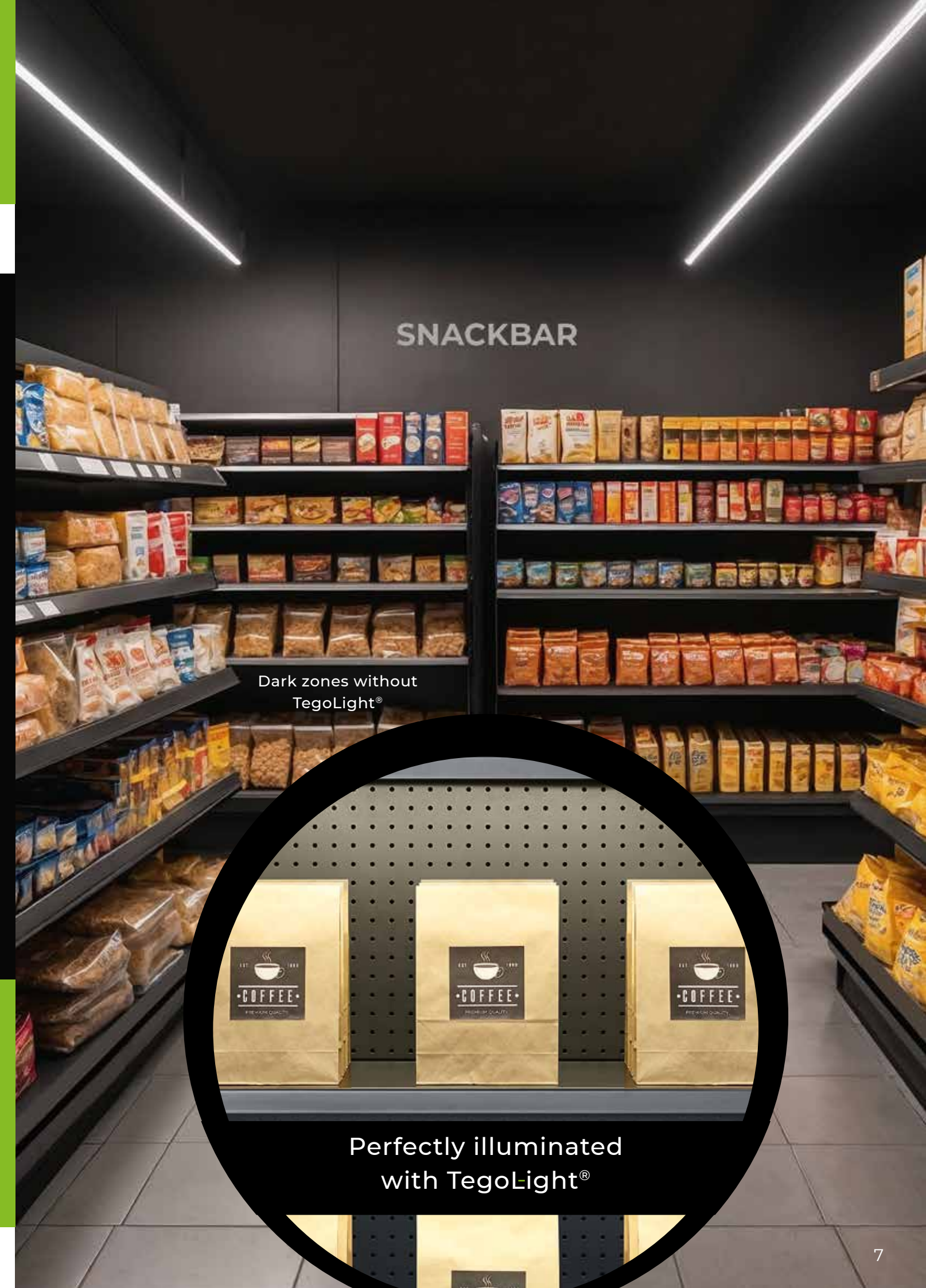
Number LED/m	Output/m	Colour	Luminous flux/m
70 LED/m	4,8W/m	2700K / 3000K / 4000K / 6500K	422 - 470 lm/m
140 LED/m	9,6W/m	2700K / 3000K / 4000K / 6500K	844 - 940 lm/m

TEGOLIGHT® STARTER KIT



STARTER KIT BASIC CONTENTS:

- for a 1000 mm wide Tegometal shelving unit or a compatible metal shelf
- for fitting 4 shelves
- 4 TegoLight luminaires of 950 mm each
- 1 Flexpowertrack à 1500 mm
- 4 connecting cables with current collectors
- Magnetic holders for invisible fastening of the connecting cables
- 1 converter (powerful 75 W for easy expansion of the range) incl. mains connection cable and connection cable with power feeder



Dark zones without
TegoLight®

Perfectly illuminated
with TegoLight®



TEGOLIGHT®

guaranteed easy installation



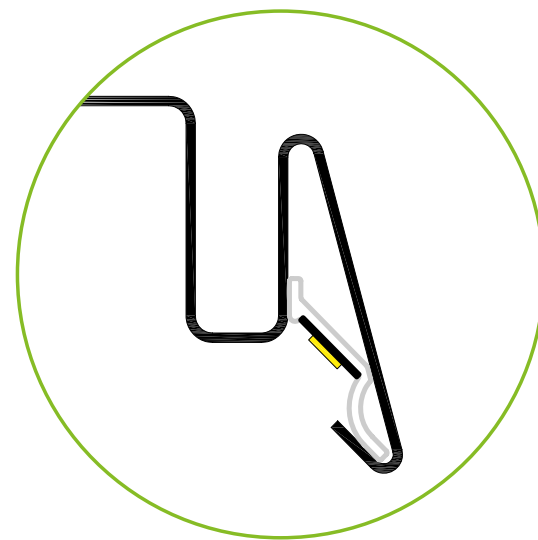
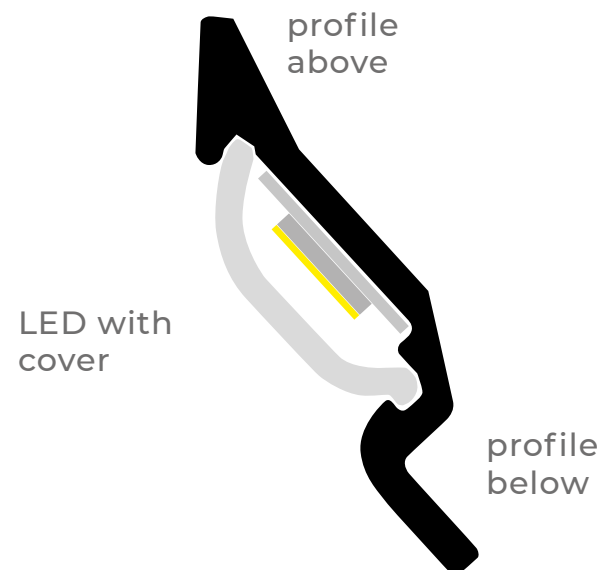
Our TegoLight® light track is available in two versions:

1. Robust aluminium profile with protective plastic cover.
2. High-quality PMMA profile with protective plastic cover.

INSTALLATION

TegoLight® can be easily inserted into the side of the outer shelf profile.

No tools are required for installation. The TegoLight® light rail is mounted almost invisibly under the shelf and therefore does not interfere with the filling and removal of goods.



ADVANTAGES:

- available for shelves from 500 - 1330 mm
- authentic product illumination
- very good energy efficiency (>130 lm/W)
- long service life

SPECIAL FEATURES:

- invisible integration into the shelf
- homogeneous illumination of the goods
- simple electrification via track possible
- tool-free assembly





eSHELF

digital advertising space on the shelf

LGP

LightGuidePanel

LED diffusing screen with lateral light feed for homogeneous, wide light distribution

COFFEE SHOP



SPECIAL OFFER

BUY 3 GET 1 FREE

BUY 3 GET 1 FREE

Header Display

Size: approx. 720 x 220 mm
Full-HD Display
Size: approx. 910 x 280 mm

Application areas

- on the shelf
- as a gondola head

Shelf Display

Sizes: e.g. 600 x 60 mm,
e.g. 900 x 60 mm

Application areas

- on the shelf

Accessories

- special bracket for screwing on

eSHELF / HEADER DISPLAY



OFF



ON

ADVANTAGES:

- slim, modern design
- simple installation
- integrated Android media player
- remote update from any computer (e.g. from headquarters)

SPECIAL FEATURES:

- animated LCD display
- low operating temperature
- ESL function
- Touchscreen (optional)
- Kiosk function

eSHELF / SHELF DISPLAY



Protective Screen for all digital displays

- to protect the display display surface

ADVANTAGES:

- slim, modern design
- lightweight and simple installation
- integrated Android media player
- remote update from any computer (e.g. from headquarters)

SPECIAL FEATURES:

- animated LCD display
- low operating temperature
- ESL function
- Touchscreen (optional)
- Kiosk function
- WiFi



eSHELF

profitable at the POS



time saving

Thanks to the ESL function (Electronic Shelf Labeling), you can update your product prices in real time and highlight promotions or special offers without having to change the labels manually. This saves time and reduces potential errors.



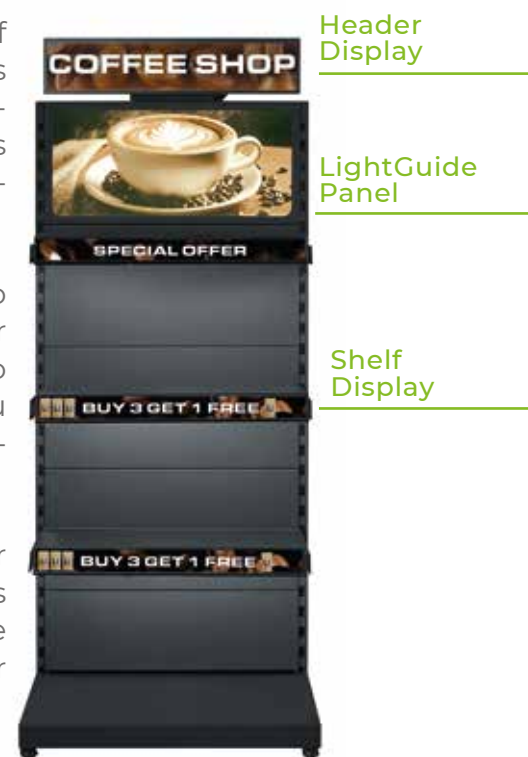
simple operation

The LCD display with ESL function is easy to operate and can be easily integrated into your existing infrastructure. You can connect it to your backend system via Wi-Fi, allowing you to update prices and product information quickly and effortlessly.



strong effect

With high resolution, you can present your products on the display in vibrant colors and razor-sharp images. This will attract the attention of your customers and increase your sales.



Available formats for header displays

Dimensions (mm)	357 x 212 x 19	618 x 137 x 27	721 x 226 x 40	915 x 281 x 46
Output (W)	20	20	40	40
Brightness (cd/m ²)	300	700	700	700
Resolution	1920 x 1080	1920 x 360	1920 x 540	1920 x 540
Active screen size (mm)	344 x 194	598 x 112	706 x 198	900 x 253

Available formats for shelf displays

Dimensions (mm)	240 x 70 x 16	599 x 60 x 16	892 x 60 x 16	977 x 70 x 21	1214 x 68 x 28
Output (W)	10	18	18	28	35
Brightness (cd/m ²)	600	700	400	500	500
Resolution	1920 x 480	1920 x 158	2880 x 158	2880 x 158	3840 x 160
Active screen size (mm)	219 x 58	586 x 50	878 x 48	959 x 53	1196 x 50



LIGHT GUIDE PANEL

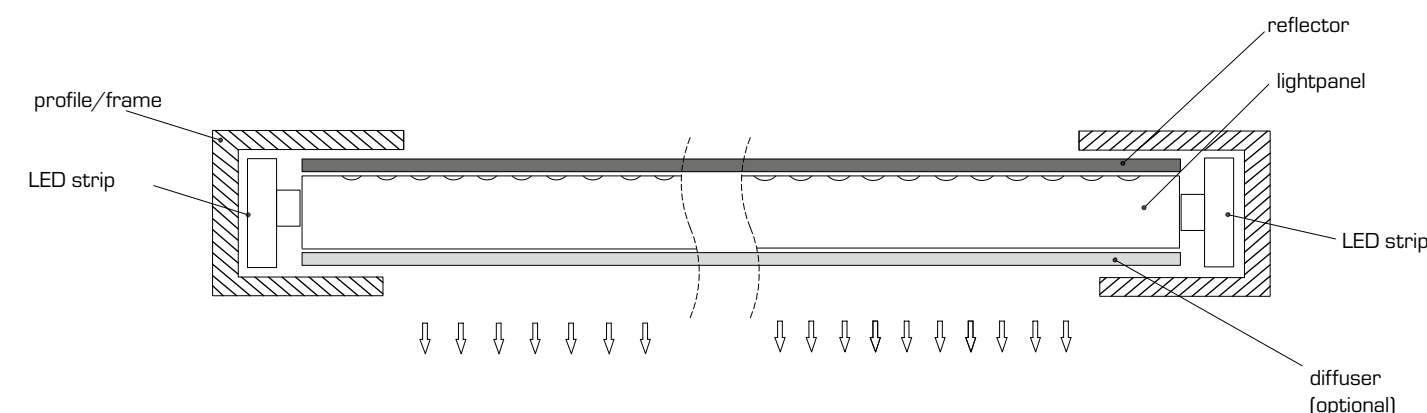
extremely flat surface light

IDEAL FOR BACKLIGHTING ADVERTISING DISPLAYS AT THE POS

Easy handling: e.g. simply insert the Lightguide panel and promotional photo into the frame and connect to the power supply or fix the photo directly onto the Lightguide panel and use it independently without a frame



STRUCTURE OF THE LIGHTPANEL



LIGHT GUIDE PANEL extremely flat surface light

MANY APPLICATION POSSIBILITIES

- Shopfitting
- Advertising technology
- Signage displays
- Exhibition stand lighting
- Furniture construction/interior design
- Facade lighting
- Showcase construction/museum equipment
- Outdoor areas (IP protection)

Lightpanels for outdoor use can also be realised depending on the application
- we will be happy to inform you about the possibilities.



EXTREMELY FLAT



SPECIAL FEATURES:

- LED diffusing disc with lateral light feed from one, two or all four sides, depending on the size of the disc.
- variable material thicknesses from 3.6 mm - 10 mm
- individually calculated engraving lasering guarantees optimum homogeneous light scattering
- with all-round aluminium U-profile on request





LIGHT WAVE

light with limitless possibilities



INCREDIBLE LIGHT OUTPUT

Uniform illumination with low power consumption and high LED clarity.



CLICK SYSTEM TO CONNECT

Sheets can be securely connected with one click.



EASY TO CUT

Sheets can be cut into almost any shape.



FLEXIBLE

Bendable along the cut surface.



ANY SIZE AND CONFIGURATION

LightWave can be adapted to almost any room and any shape.

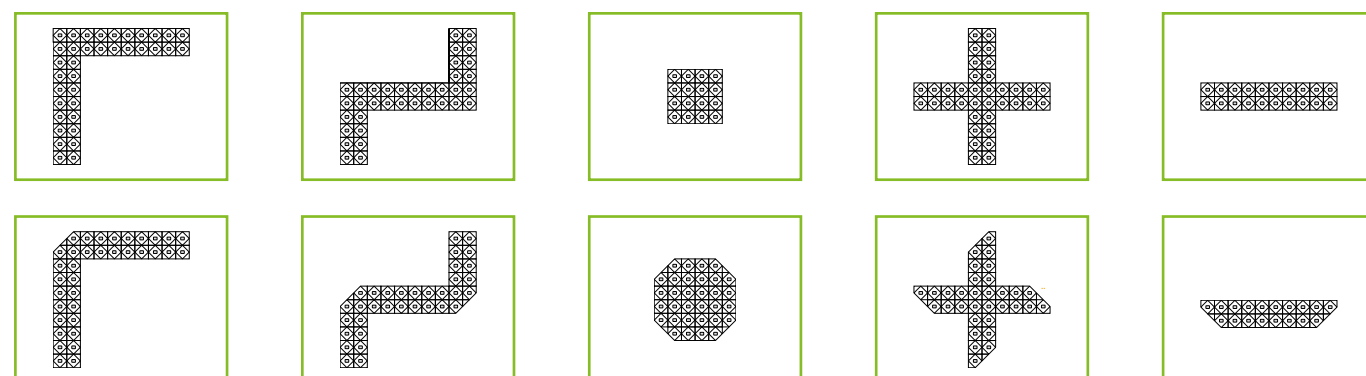


SIMPLE APPLICATION

Our 3M adhesive film enables easy installation. The screws supplied are used as spacers when, for example, glass panes are placed on the modules.



TAILORING OPTIONS

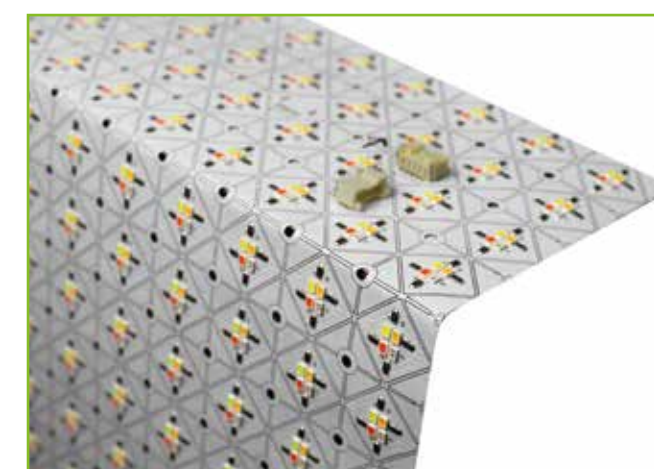
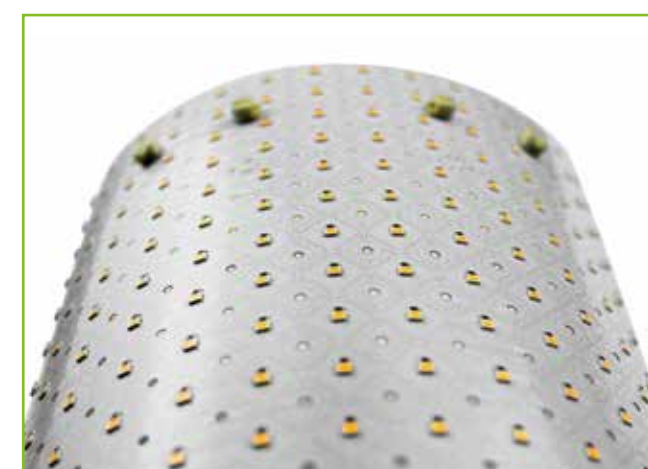


Sizes	Types	Colours	LED-quantity	Power	Efficiency	Light output	CRI
235 x 503 x 7mm	Single Color	2700K	420	15W	113 lm/W	1700 lm	Ra >80
		3000K	420	15W	113 lm/W	1700 lm	Ra >80
		4000K	420	15W	117 lm/W	1750 lm	Ra >80
		5000K	420	15W	119 lm/W	1780 lm	Ra >80
		6500K	420	15W	119 lm/W	1780 lm	Ra >80
235 x 503 x 7mm	Tuneable CCT	2700K	420	15W	113 lm/W	1700 lm	Ra >80
		6500K	420	15W	119 lm/W	1780 lm	Ra >80
305 x 610 x 7mm	RGBW	red	288	11W	107 lm/W	1180 lm	Ra >80
		green	288	11W			Ra >80
		blue	288	11W			Ra >80
		5000K	288	11W			Ra >80

FLEXIBLE, MODULAR LIGHT PANELS

Unleash your creativity with LEDTEC Light Wave

The self-adhesive film can be bent like a light wave and follows every curve or edge of the object or room to be illuminated. It is suitable for backlighting large areas and only requires an extremely low installation height.





FLEX POWERTRACK

electrification of shelves at the POS



Simple assembly

Simple installation; fastening with adhesive or magnetic tape. Power connectors can be positioned flexibly on the conductor rail (= maximum flexibility). Fits behind standard shelves.



easy to cut

Illumination of your sales shelves without disruptive and visible cables; can be shortened as required.



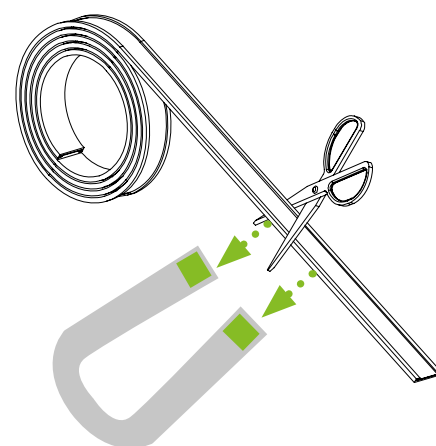
Light and digital devices

Integration of light and digital devices possible.

FLEXPOWERTRACK

SPECIFICATIONS

- Input voltage: 5-48 V DC
- ax. load: 8A
- Length: 10 metre roll
- Width: 17,3mm
- Height: 2,2mm
- Colour: black



magnetic & individually shortenable

LED POWERTRACK

SPECIFICATIONS

- Input voltage: 12/24 V DC
- ax. load: 8A
- Length: 1000/ 1200/ 1500/ 2500 mm
- Width: 14mm
- Height: 6mm
- Colour: black or white



FIXING OPTIONS

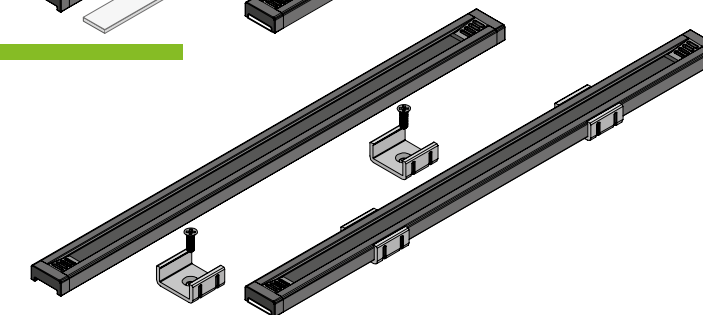
1, Magnetic adhesive tape for metal shelves



2, Magnetic adhesive tape for metal shelves



3, Mounting clips for wooden shelves





LEDTEC

LEDtec GmbH

Abelbachstraße 13
33142 Büren

T. +49 (0) 2951 93838-300
info@ledtec.eu
www.ledtec.eu