

LEDTEC

Linear Lighting
Luminous contours





CREATE IMPRESSIVE AND
HOMOGENEOUS LIGHT LINES
WITH THE PROFILES OF THE
FLEXLINE SERIES.

ILLUMINATE CONTOURS, LET-
TERING OR EVEN FACADES
- ABSOLUTELY HOMOGE-
NEOUS WITH THE FLEXIBLE
PROFILES.

The flexible profiles are made of high
quality silicone and thus perfectly pro-
tected against moisture, contact and
dust.

Due to the production in our manufac-
tory in Germany, we have the possibili-
ty to individually adapt the products to
your projects.

Depending on the application require-
ments, you can choose different LED
modules and profile cross-sections as
the basis of the lighting solution - and
that already from batch size 1. Benefit
from a wide range of customization
options - we adapt brightness, length,
shape, protection class and much more
for you.

The various designs and types open up
a wide range of design options both in-
doors and outdoors, for example as de-
corative lighting, architectural lighting
and facade lighting, as well as in ship
and yacht building.

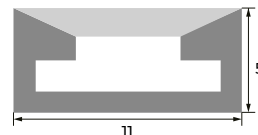
FLEXLINE TOP 0511



SPECIFICATION

- Part no.: 0835650001
- Outside dimension: 5 x 11 mm
- Inside dimension: 8 mm
- Material: Silicone
- Surface: clear, white

DRAWING



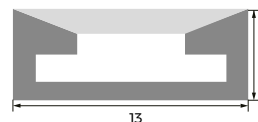
FLEXLINE TOP 0513



SPECIFICATION

- Part no.: 0835650002
- Outside dimension: 5 x 13 mm
- Inside dimension: 10 mm
- Material: Silicone
- Surface: clear, white

DRAWING



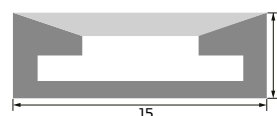
FLEXLINE TOP 0515



SPECIFICATION

- Part no.: 0835650003
- Outside dimension: 5 x 15 mm
- Inside dimension: 12 mm
- Material: Silicone
- Surface: clear, white

DRAWING



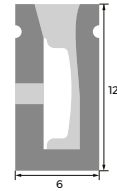
FLEXLINE SIDE 1206



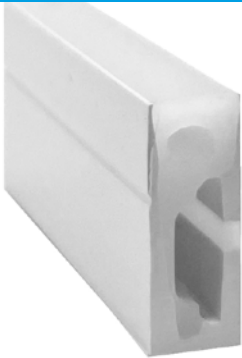
SPECIFICATION

■ Part no.:	0835650008
■ Outside dimension:	12 x 6 mm
■ Inside dimension:	8 mm
■ Material:	Silicone
■ Surface:	milky, white

DRAWING



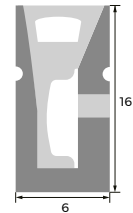
FLEXLINE SIDE 1606



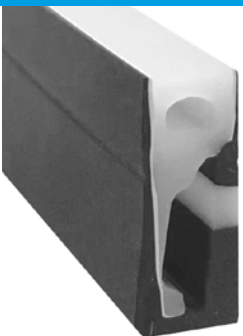
SPECIFICATION

■ Part no.:	0835650009
■ Outside dimension:	16 x 6 mm
■ Inside dimension:	8 mm
■ Material:	Silicone
■ Surface:	milky, white

DRAWING



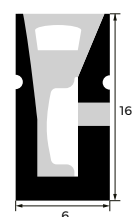
FLEXLINE SIDE 1606 BLACK



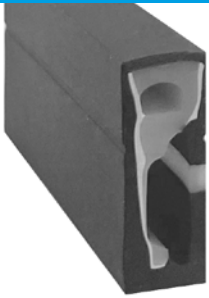
SPECIFICATION

■ Part no.:	0835650010
■ Outside dimension:	16 x 6 mm
■ Inside dimension:	8 mm
■ Material:	Silicone
■ Surface:	milky, black

DRAWING



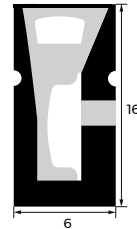
FLEXLINE SIDE 1606 FULL BLACK



SPECIFICATION

- Part no.: 0835650011
- Outside dimension: 16 x 6 mm
- Inside dimension: 8 mm
- Material: Silicone
- Surface: black, black

DRAWING



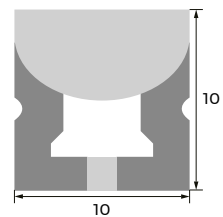
FLEXLINE TOP 1010



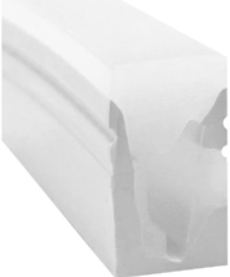
SPECIFICATION

- Part no.: 0835650004
- Outside dimension: 10 x 10 mm
- Inside dimension: 6 mm
- Material: Silicone
- Surface: clear, white

DRAWING



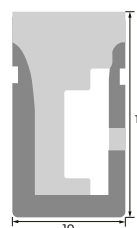
FLEXLINE SIDE 1810



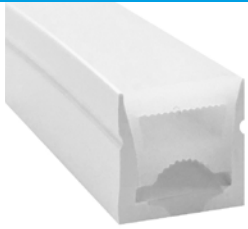
SPECIFICATION

- Part no.: 0835650012
- Outside dimension: 18 x 10 mm
- Inside dimension: 10 mm
- Material: Silicone
- Surface: milky, white

DRAWING



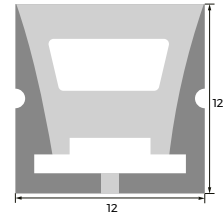
FLEXLINE TOP 1212



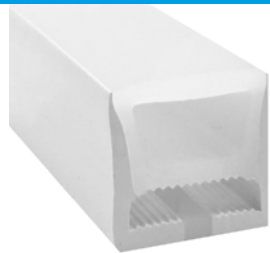
SPECIFICATION

■ Part no.:	0835650005
■ Outside dimension:	12 x 12 mm
■ Inside dimension:	8 mm
■ Material:	Silicone
■ Surface:	milky, white

DRAWING



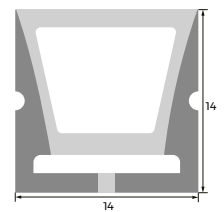
FLEXLINE TOP 1414



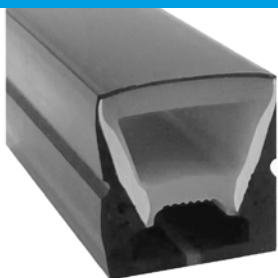
SPECIFICATION

■ Part no.:	0835650006
■ Outside dimension:	14 x 14 mm
■ Inside dimension:	10 mm
■ Material:	Silicone
■ Surface:	milky, white

DRAWING



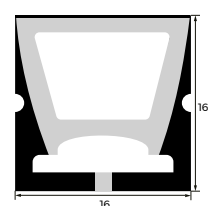
FLEXLINE TOP 1616



SPECIFICATION

■ Part no.:	0835650007
■ Outside dimension:	16 x 16 mm
■ Inside dimension:	10 mm
■ Material:	Silicone
■ Surface:	black, black

DRAWING

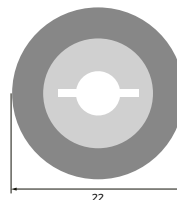


FLEXLINE ROUND 22

SPECIFICATION

- Part no.: 0835650013
- Outside dimension: \varnothing 22 mm
- Inside dimension: 8 mm
- Material: Silicone
- Surface: milky, white

DRAWING

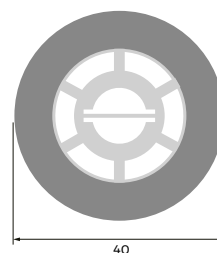


FLEXLINE ROUND 40

SPECIFICATION

- Part no.: 0835650014
- Outside dimension: \varnothing 40 mm
- Inside dimension: 10 mm
- Material: Silicone
- Surface: milky, white

DRAWING



PRODUCT BENEFITS



HOMOGENEOUS LIGHT

The opacity of the FLEXLINE profiles ensures uniform illumination without visible light spots, e.g. on mirrors or smooth surfaces.



WEATHER RESISTANT

The material used is UV-resistant and can be used outdoors.



VERSATILITY

Countless combination options are available in terms of brightness, colour temperature, etc.



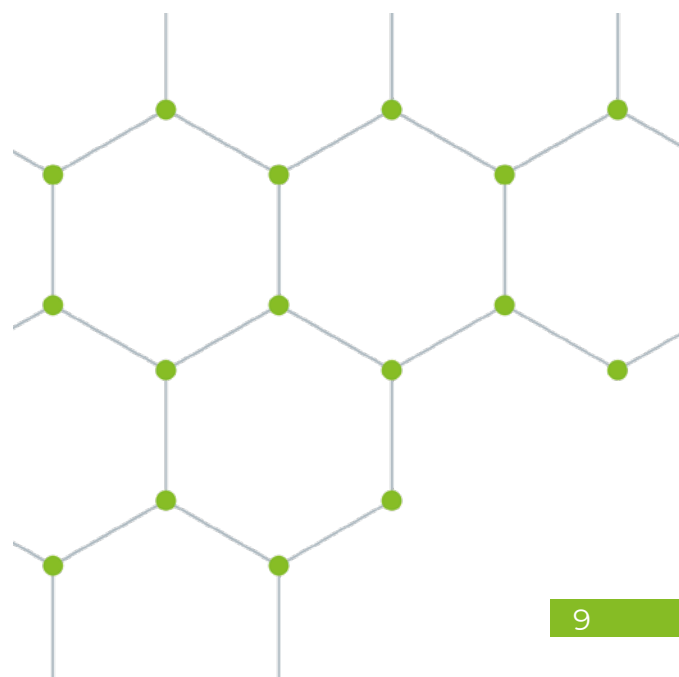
WATERPROOF

The FLEXLINE profiles can be protected against the ingress of dust and water



FLEXIBILITY

With the FLEXLINE profiles, shapes and contours can be homogeneously illuminated.









LEDTEC

LEDTEC GmbH

Abelbachstraße 13
33142 Büren-Steinhausen

T. +49 (0) 2951 93838-300

info@ledtec.eu

www.ledtec.eu